



North Branch  
Land Trust

2020 | Annual Report





# North Branch

---

## Land Trust

### STAFF

---

PAUL LUMIA  
*Executive Director*

RYLAN COKER  
*Land Protection and  
Stewardship Coordinator*

PAULA FALL  
*Land Steward and  
Activities Coordinator*

BARBARA ROMANANSKY  
*Director of Development*

LAUREN GORNEY  
*Development and Outreach*

Maureen Whipple  
*Office Administrator*

### BOARD OF DIRECTORS

---

Christina Dilks Taylor, *Chair*  
Fred Valentine, *Vice Chair*  
Peter M. Butera, *Treasurer*  
John L. Zembruski, Esq., *Secretary*

---

Kelly A. Bray Snyder, Esq.  
Barry H. Dyller, Esq.  
Ryan Flood  
Chris Grover  
Richard Hazzouri  
Joshua D. Katyl  
Mary Kolessar  
Elizabeth Eckman Lloyd  
Guthrie Mitchell  
John J. Pekarovsky III  
Guy F. Rothery  
Vincent A. Scarpetta  
Brian P. Stahl, Esq.  
Gary J. Swartz, Jr.

**MISSION STATEMENT:**  
North Branch Land Trust  
conserves the natural,  
working and scenic landscapes  
in Northeastern Pennsylvania  
that enrich our lives.

COVER PHOTO:  
*Frances Slocum by Matt Giambra*

*Picton Wildlife Sanctuary, White Haven*







# THE LAND WE LOVE

**2020** was a challenging year!

Many of us found ourselves somewhat isolated, separated from loved ones, our usual pursuits, and lifestyles we may have taken for granted. We had to modify and adjust both physically and mentally and most importantly keep a positive attitude in the face of adversity. It has been difficult at times but one comforting and constant companion has been the land we love. We took to the trails, the streams and rivers, the mountains, beaches, and open spaces to rejuvenate and recharge. We turned to the lands we love to help us fill avoid and keep us on a solid physical and mental footing.

All of us at NBLT thank all of you for supporting our land conservation efforts throughout 2020. We continue to press forward conserving and protecting the natural wonders in our region that sustain us in good times and in bad. Progress is being made and with your help the land we love today will be here tomorrow and for generations to come. However, we do have an impact on the land and must be good stewards now and in the future as our lives literally depend on it. Nature gives us so much and asks for so little in return.

Thank you for your financial support. Your tax deductible dollars go directly toward our land conservation and trail building projects and most importantly help protect in perpetuity the land we love.

With respect,



**Paul Lumia**  
*Executive Director*



# Thoughts from the Staff



## ◀ Maureen Whipple

### *Office Administrator*

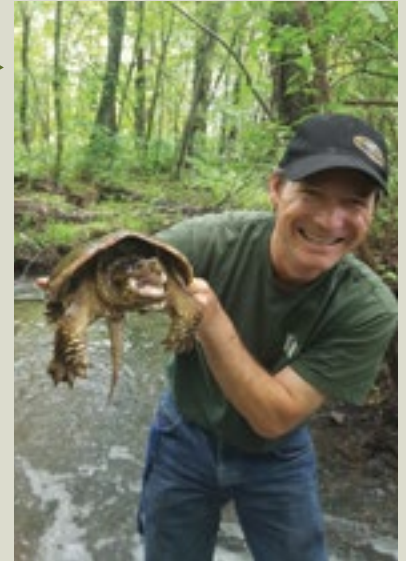
We should never take unencumbered natural lands for “Pass Nature Forward. Boomers could be the last generation to remember a time when it was considered normal and expected for children to play in the woods and fields. When we leave this earth, will the memory of such experiences leave with us? Reconnecting the young to the natural world could be our greatest, most redemptive cause.”

~ Richard Louv - Vitamin N (2016)

## ▶ Ryan Coker

### *Land Protection and Stewardship Coordinator*

“Why conservation? For some it might be a connection to the past and a preservation of a memory for future generations to be able to enjoy; for others, a way to balance environmental integrity and developmental pressure. Whether it is conserving a forest, waterway or farm, permanent preservation may be the only way to ensure future viability for those to come.”



## ◀ Paul Lumia

### *Executive Director*

We should never take unencumbered natural lands for granted! The natural lands we love give us so much while asking nothing of us. They provide resources for our survival, habitat for plants and animals, and environments to energize our minds and bodies. The lands we live on and the natural lands available to us are a finite resource! We should always have an eye on striking a balance between development and conservation of the natural resources that sustain us.

## ▶ Lauren Gorney

### *Director of Development*

It seems as if this was the year the world re-discovered nature. The silver lining of an otherwise challenging, and sometimes scary year, was the opportunity to slow down and reconnect with our roots. The cultural and ancestral heritage of the NEPA region was born of the landscape, and what a year it was to plant our feet firmly on this ground. My neighborhood trail on the Penobscot Ridge was bustling with more people than the land has seen since it was last used for mining. The once coal-scarred lands were covered in green vegetation and hikers in bright color clothing, only outshined by the sun, illuminating the hills in a warm, welcoming glow. 2020 was many things, and my favorite of them? Answering the call to return to “home.”





## ◀ Paula Fall

### *Land Steward and Activities Coordinator*

Two words come to mind when I think of 2020; change and adaptation. At home, I found myself taking on the stress of a kindergartner doing virtual school for a while, picture a 5-year-old hiding under the table for math class! One thing, however, remained constant and that was getting outdoors to balance the stress and uneasiness caused by major changes. As non-essential business and social activities stopped, the forest remained open. Places where I hike suddenly became packed with people! Trails became a hot commodity and an essential need for health and happiness. I cannot think of a better way to affirm the need for open space.

## BARB ROMANANSKY

### *Director of Development, Retires*

Barb has a deep and contagious passion for protecting the beauty of nature and all that it offers. Barb started her journey with NBLT in 2008 working in an administrative role helping run the day-to-day office operations. Her enthusiasm and willingness to take on new challenges soon lead her toward a development role and the task of engaging donors and friends of land conservation far and wide. Barb retires as the Land Trusts first Director of Development and has the distinction of substantially growing our donor base and building long-term relationships with many members of our community.

**IN BARB'S WORDS:** It has been an honor to be part of a small but mighty team that has conserved over 22,000 acres of our beautiful NEPA land. I am so fortunate that, in the second half of my life, I was able to be in a position where I could pursue my passion of connecting people to the land and protecting nature. I will miss the interaction with NBLT donors and supporters but I'm thrilled to continue the many friendships forged over the common bond of land conservation. My retirement is a bittersweet moment as I love NBLT and its conservation mission but I'm looking forward to spending more time in my kayak, traveling, spreading my volunteer wings and becoming more involved with the Adaptive World.

Please continue to support North Branch Land Trust as there are thousands of more acres to conserve in order to protect habitat, watersheds, farms, and our beautiful scenic views. As Jane Goodall states "You cannot get through a single day without having an impact on the world around you. What you do makes a difference, and you have to decide what kind of difference you want to make."





# VOLUNTEERS



## *Volunteer of the Year*

### **Mike Gondell**

Mike Gondell is very passionate about the environment. He is also very knowledgeable about plants, which is why he took over the pollinator garden at the Picton Wildlife Sanctuary. Through hours of planning and maintenance, he has brought the garden to life. The garden serves as a food source and habitat for butterflies, moths, bees, and other pollinators.

Mike is also involved with many organizations whose goal is to save and enjoy the environment. He volunteers with Trout Unlimited, Broadhead Watershed Association and Greater Hazleton Rails to Trails, to name a few. Because of Mike's commitment to NBLT and the greater good of NEPA, the Land Trust is honored to name him Volunteer of the Year.



## **To All NBLT Volunteers**

Thank you for your continued support, adaptation and hard work! Your efforts make it possible for the Land Trust to sustain its land conservation mission. The Land Trust is especially grateful for all of your efforts and perseverance through a challenging year.

To the Community: please consider volunteering your time and talents. The staff at North Branch Land Trust is always grateful for volunteer support to help with land stewardship, planning and executing activities, serving on committees, and providing expertise in many other areas regarding the land and protecting it for future generations.

**If you have interest in supporting our mission  
PLEASE CONTACT US!**





# Programs & Activities

Although many Land Trust events and activities had to be postponed this past year – we pushed forward. We all needed nature more than ever and getting outdoors was essential to our health and wellbeing. As spring approaches we look forward to having you join us in nature for programs and activities.

## PASSING NATURE ON TO THE NEXT GENERATION

The first program in NBLT's "Discovery and Connection" series for children was "Winter Animal Survival." The program, which is one in a series of four, was held on March 1st, 2020 at Bear Creek Camp in Bear Creek. The program, taught by Environmental Educator Charlene Wildes, focused on how animals survive the harsh winters. The children learned which animals migrate, hibernate or adapt to survive the winter months.

The group hiked to a lake looking for animal signs. Among the finds were an empty Monarch chrysalis, the cocoon of a Prometheus moth, tracks from a squirrel, a bird's nest and fox scat.

After returning, the kids had a "frozen critter" snack of whipped cream and chocolate ice cream with a surprise animal inside. Activity sheets and a groundhog craft finished the program.

All four programs are provided through a grant from the Luzerne Foundation and an anonymous donor. The three remaining programs will be rescheduled. They include Animals in your Backyard, Who Lives in And Around the Water and Discovery Forest Walk.

Thank you to NBLT volunteer Tina Fiorani and Bear Creek Camp staff Denise Abrams for helping with this event.

*Let the children be free; encourage them; let them run outside when it is raining; let them remove their shoes when they find a puddle of water; and when the grass of the meadows is wet with dew, let them run on it and trample it with their bare feet; let them rest peacefully when a tree invites them to sleep beneath its shade; let them shout and laugh when the sun wakes them in the morning.*

~ Maria Montessori



# DRIVE THROUGH ANNUAL DINNER 2020

Recognizing Geisinger with our Community Stewardship Award for their unwavering commitment to promoting a healthy lifestyle by encouraging people to connect with the land through recreational opportunities and educational initiatives. Thank you Geisinger and thank you to all our sponsors, donors, and supporters of our Annual Dinner and our mission to protect the natural places we love and cherish!



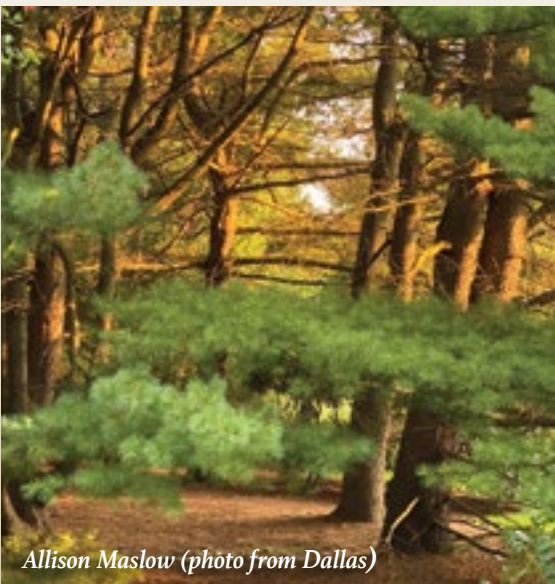
Left to right: Christina Taylor, NBLT Board Chair; Paul Lumia, NBLT Executive Director; Deno Pantelakos, Photographer; Lissa Bryan-Smith, Chief Administrative Officer Geisinger Bloomsburg Hospital; Ron Beers, Chief Administrative Officer Geisinger Northeast Region; and Cheryl Connolly, Senior Director of Advancement Geisinger Northeast Region.



Thank you to Dinner Chair Alison Zurawski, Auction Chair Lissa Bryan-Smith, Staff Coordinator, Barb Romanansky, the Westmoreland Club and all the wonderful Committee members for conquering challenges and putting together one of the most successful and memorable annual dinners to date! We appreciate you!



Our **Hike From Home** Photo Contest got us out to document some of our favorite places in nature. Thank you to all the participants and the wonderful photos and congratulations to the winner Matt Giambra and his photo taken at dark at Francis Slocum State Park. Matt's photo is our cover photo this year. We look forward to future submissions as our *Hike From Home* series continues. Enjoy nature!



Allison Maslow (photo from Dallas)



Richard Pries (photo from Mehoopany)



# Land Protection Projects 2020

The permanent protection of the regions natural land resources continues to be our main focus! As a community nonprofit we utilize the funds you donate to help complete land protection projects that will be relevant for generations to come.

Even given the challenges of 2020 we were able to advance our conservation mission. Existing projects were completed, new projects started and ongoing projects advanced. Our success is a testament to your trust and support in us . . . Thank You!



*Northeastern Pennsylvania Bobcat*

## Hanover Reservoir Acquisition Project – Phase II

700 Acres | Hanover Township, Luzerne County

### **WATERSHED:**

Hanover Reservoir, Espy Run, Nanticoke Creek, Susquehanna River, Chesapeake Bay

### **KEY PARTNERS:**

Earth Conservancy; Hanover Township; Pennsylvania Department of Conservation and Natural Resources (DCNR), Bureau of Recreation and Conservation – Community Conservation Partnership Program; DCNR Bureau of Forestry



*Penobscot Mountain Highlands, Part of the Hanover Reservoir Project Area*

In November, 2019 North Branch Land Trust (NBLT) was awarded a grant in the amount of \$850,000 from the Community Conservation Partnership Program administered by the Department of Conservation and Natural Resources (DCNR) to acquire 700 acres on Penobscot Mountain including the historic Hanover Reservoir. On October 8th, 2020 NBLT was awarded a second

grant in the amount of \$850,000 from DCNR to acquire an additional 700 acres surrounding the Hanover Reservoir bringing the total lands to be acquitted to 1,400 acres. Funds for this project come from the Keystone Recreation, Park and Conservation Fund (Key 93), the Environmental Stewardship Fund (Growing Greener) and federal funds.

After survey and a thorough environmental review, NBLT will acquire the property and transfer it to the Pennsylvania Bureau of Forestry and the Pinchot State Forest System. This beautiful tract will add to the over 4,000 acres on Penobscot Mountain previously transferred to the Pinchot State Forest System by NBLT. Public access and recreation opportunities will be plentiful.



# ALEXANDERIAN ACQUISITION PROJECT

184 Acres | Bear Creek Township

## WATERSHED:

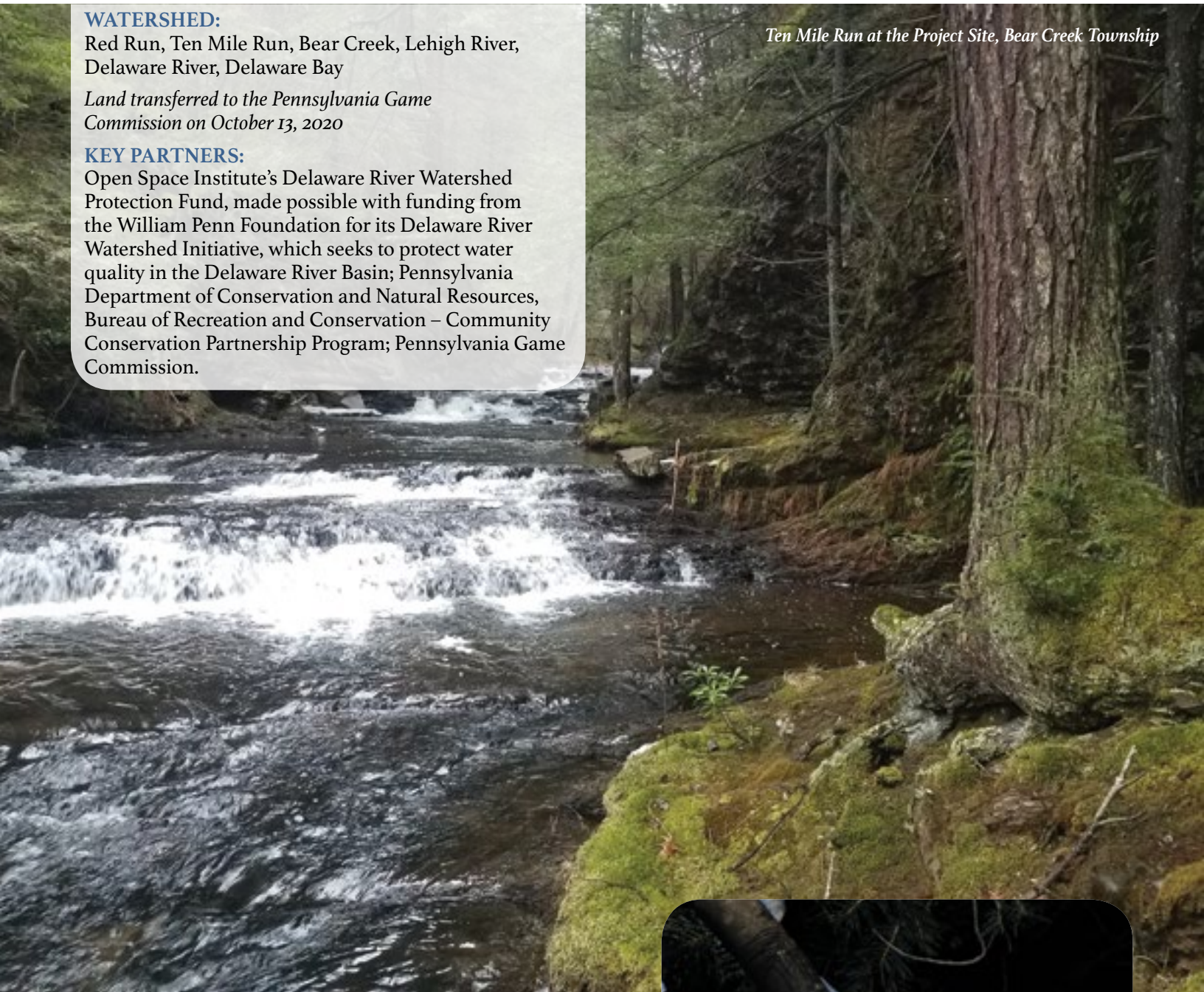
Red Run, Ten Mile Run, Bear Creek, Lehigh River, Delaware River, Delaware Bay

*Land transferred to the Pennsylvania Game Commission on October 13, 2020*

## KEY PARTNERS:

Open Space Institute's Delaware River Watershed Protection Fund, made possible with funding from the William Penn Foundation for its Delaware River Watershed Initiative, which seeks to protect water quality in the Delaware River Basin; Pennsylvania Department of Conservation and Natural Resources, Bureau of Recreation and Conservation – Community Conservation Partnership Program; Pennsylvania Game Commission.

*Ten Mile Run at the Project Site, Bear Creek Township*



Completed this past year the Alexandrian Acquisition Project in Bear Creek is quite special. Located on the northwestern edge of the Pocono Plateau this parcel includes a unique northern boreal forest habitat. Two high-quality streams, Ten Mile Run and Red Run flow unobstructed and Bobcat, Brook Trout, Snowshoe Hare and other dense forest-loving creatures find a home here.

The property has been transferred to the Pennsylvania Game Commission and will now be part of Game Lands 91. The property is forever wild and helps link many thousands of acres of protected lands in the area. A big thank you goes out to the Alexandrian family for helping to protect this very special piece of forest habitat in Luzerne County.



*Barred Owl on the Pocono Plateau*



# D & L TRAIL CONSTRUCTION UPDATE

6.2 miles | Wilkes-Barre Township, Laurel Run Borough, Plains Township

## WATERSHED:

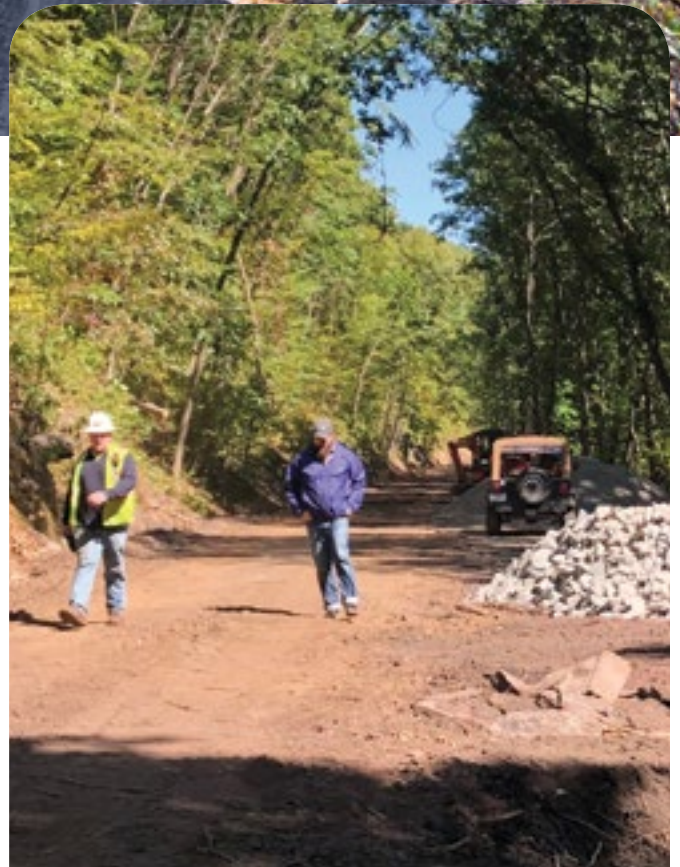
Laurel Run, Susquehanna River, Chesapeake Bay

## KEY PARTNERS:

Delaware and Lehigh National Heritage Corridor; Laurel Run Borough; Luzerne Foundation; Pennsylvania Department of Community and Economic Development – Greenways, Trails and Recreation Grant Program; Pennsylvania Department of Conservation and Natural Resources (DCNR), Bureau of Forestry; PA DCNR Bureau of Recreation and Conservation – Community Conservation Partnership Program; Pennsylvania Department of Environmental Protection, Bureau of Abandoned Mine Reclamation – Grant Program; Pennsylvania Department of Transportation; Plains Township; Sordoni Family Foundation; Wilkes-Barre Township.



*Trail construction in Laurel Run Borough near the Seven Tubs Nature Area*



The 165 Delaware and Lehigh National Heritage Corridor (D & L) trail from Bristol in Bucks County, PA to Wilkes-Barre is well on its way to being completed. Check out the D & L website for information on the entire trail at [www.delawareandlehigh.org](http://www.delawareandlehigh.org).

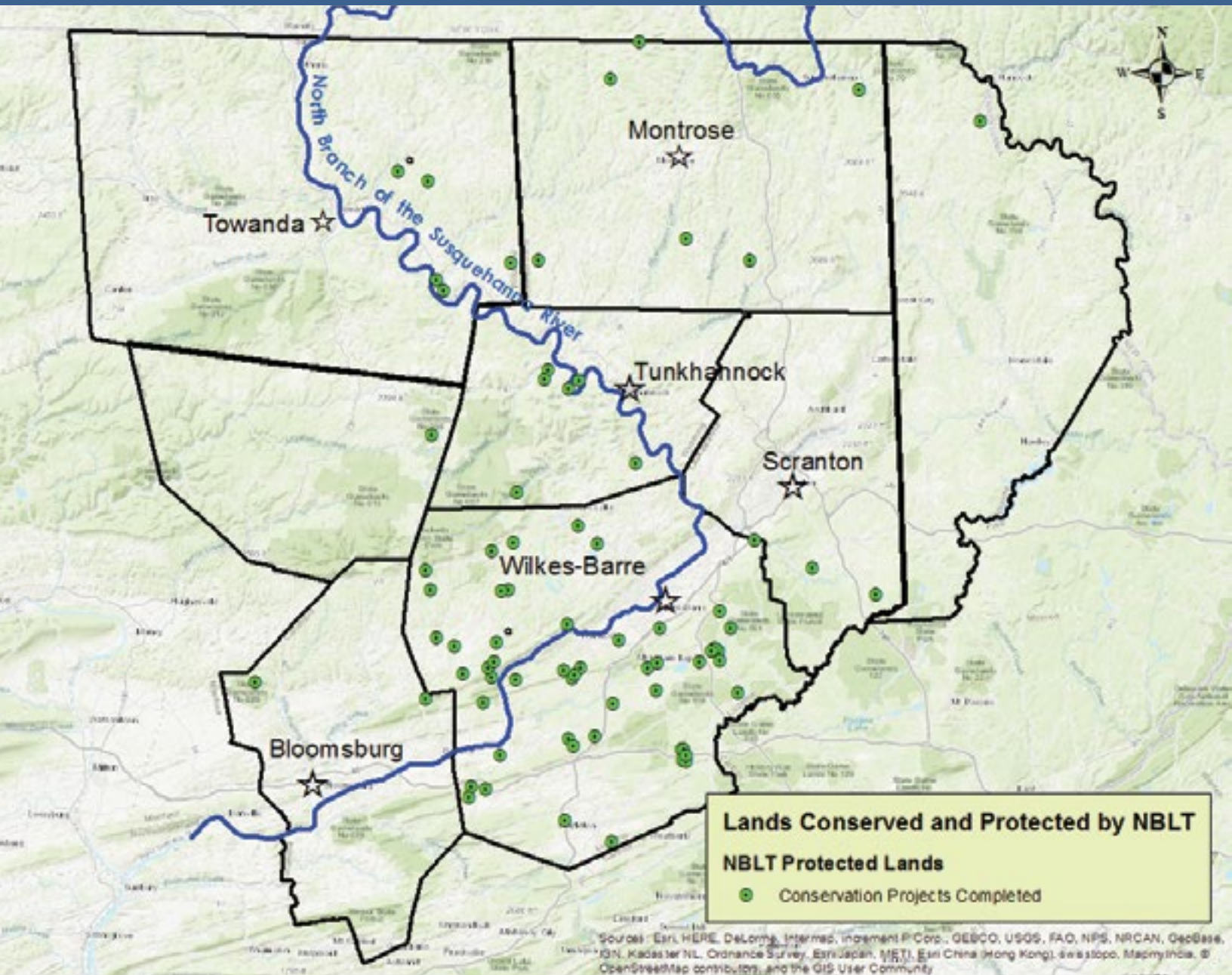
The Delaware & Lehigh National Heritage Corridor organization located in Easton, PA has many dedicated partners working hard to complete all 165 miles of trail. North Branch Land Trust has committed to completing the last 6.2 miles into Wilkes-Barre and we are under construction. This section runs from Oliver Mills in Laurel Run Borough through Plains Township and back into Laurel Run and Wilkes-Barre Township. This section of trail runs on the old Lehigh and Susquehanna Railroad line which was a subsidiary of the Leigh Coal and Navigation Company.

Public trail systems that are accessible to those of us living in and around urban areas are vitally important. They give us easy access to affordable recreation opportunities, help improve our health and wellbeing, and also vastly improve the economic outlook of the regions where they are located.



# NBLT Completed Projects Map as of Year End 2020

84 PROJECTS COMPLETED IN EIGHT COUNTIES  
WITH OVER 22,500 ACRES PROTECTED



## GIVING THROUGH YOUR ESTATE

North Branch Land Trust would like to thank those who have included NBLT in their estate planning. If you are interested in conserving your land, donating land or financial assets through your estate we would be happy to discuss options and benefits. The natural land we live on is a finite resource and planning now to protect it for our children, grandchildren and future generations is critical



# DONORS

January 1 to  
December 31, 2020

We extend sincere thanks to the conservation-minded friends whose commitment and support make possible North Branch Land Trust's efforts to conserve land and connect people to nature in Northeastern Pennsylvania. The donors listed on the following pages provided meaningful support throughout the year.

## HIGHLANDS GUARDIAN \$5,000 and Above

DiscoverNEPA  
Geisinger  
Hackett Philanthropies Foundation  
Bill & Wilma James  
Kenneth & Caroline Taylor Family Foundation  
Paul D. Wasserott Foundation  
Sordoni Family Foundation  
William Penn Foundation Special Gifts Program  
Yellow Zinnia Fund



*Monarch Butterfly Cocoon*



## WOODLANDS GUARDIAN \$2,500-\$4,999

Berkshire Asset Management  
Lissa Bryan-Smith & Richard M. Smith  
Community Bank  
Jim & Flo DePolo  
Edith Reynolds Trust  
McCarthy Tire Service  
PA American Water  
PNC Bank  
Riggs Asset Management Company

*Caterpillar*



*Howland Preserve*





*Rogers Creek at Huntington Mills by Bruce Whipple*

**RIVER GUARDIAN**  
\$1,000-\$2,499

Sarah Block	Highway Equipment & Supply Co.	Pride Mobility Products Corp.
Kelly Bray Snyder	Frank & Molly Hoegen	James & Barbara Rogers
Peter & Lesa Butera	Dr. Steven Kafrissen & Sheila Saidman	Guy & Christine Rothery
The Constellation Fund of The Luzerne Foundation	Cla yton & Theresa Karambelas	Simon & Co. Jewelers
Mwark & Traci Cross	Thomas R. Kneidinger	Socialoco
Barry H. Dyller, Esq. & Honorable Lesa S. Gelb	Kathleen Leclerc	Brian & Lauren Stahl
Earth Conservancy	Paul & Colleen Lumia	Sundance Vacations
Dan & Annie Fierman	M&T Charitable Foundation	Valentine’s Jewelry
The Hal & Jean Flack Family Fund of The Luzerne Foundation	Michele Millington & Marty Wentz	Sally VanWhy
Ryan & Katie Flood	Mohegan Sun Arena at Casey Plaza	Michael D. & Caitlin Weaver
Richard J. & Kimberly Hazzouri	O’Donnell Law Office	Bruce & Gert Whipple
	Deno Pantelakos Jr.	Dr. Thomas G. & Janis R. Winter



**PROTECTOR**  
\$500-\$999

Ace-Robbins, Inc.	Joe & Pete Kneidinger	Bob & Barb Romanansky
Allen H. & Margaret W. Alexander	Kohanski & Company, PC	Thomas E. & Karen Sox
Bank of America Charitable Foundation	Dr. Michel & Pamela Lacroix	Straub Metal International Inc.
Benevity Community Impact Fund	Theresa Langan	Studio BE
The Black Horse Foundation, Inc.	Leverage Fitness Studio	Joe & Keiko Stusnick
Boden	John W. & Elizabeth Lloyd	Trey & Christina Taylor
Bill & Carole Burak	M&T Bank	Terrana Law, P.C.
Dr. Michael & Deborah Klayman Callahan	Holly Leandri-May	John S. Thalenfeld
Sarah P. Carr	Mick & Judy Mertz	Alan R. Viani
Ace-Robbins, Inc.	Metz Family Foundation Inc	David L. Wagner & Elizabeth Cecil
Dr. Alfred & Mary Casale	Terence & Margaret Neville	The Westmoreland Club Charitable Foundation Fund of The Luzerne Foundation
Frank E.P. & Marion Conyngham	Dale & Ellen Parmenteri	Wilkes-Barre Family YMCA
Golden Business Machines, Inc.	Shep Pawling	
Ralph Graeser		
Robert Grajewski & Susan Garing		
Greater Wyoming Valley Chamber of Commerce		
The Hazzouri Group at Morgan Stanley		
David & Sharon Hourigan		
George & Barbara Hugo		
Humford Equities, Inc.		
George Isaacs		
Nell-Ann Kappler		
Sue Kappler		
David & Kathy Kautter		
Michael C. & Lou Ann Kilmer		





Senator Lisa Baker

Margaret Bakker & Rob Lewis

BB&T Commercial Community Bank

Geoff & Emily Bell

The Bebevino Family Fund of  
The Luzerne Foundation

Chris & Eileen Blazic

Paul & Donna Bookstein

Anthony T.P. Brooks &  
Matthew Malani

buka

Mike Burnside

Robert L. Carson

Dr. Carl & Susan Charnetski

Bob & Jeannie Clements

Rob Coburn

Cheryl Connolly

Cook's Pharmacy

Michael & Meg Cramton

Christine Davis

Phil & Judy Decker

Joseph & Nan DeMarco

Thomas Dorko

Dundee Gardens

Paula Fall & Brian Gettig

Fidelity Bank

First National Bank  
of Pennsylvania

Dr. Seth & Carolyn Fisher

Judd B. & Dianne Fitze

Fox Hill Country Club

The Fund of Luzerne County of  
The Luzerne Foundation

Clarence Givens, Jr.

Gretta A. Gross

Guthrie Mitchell Insurance Agency

Harold C. Snowdon Home  
for Funerals, Inc.

George Hart

Molly Hinkin

Elizabeth Hughes

Jerry & Marnie Idec

Jacobi Capital Management

Dave & Kate Jenkins

Johnson & Johnson

Benjamin R. Jones, IV

John Keker

Marcella Kelly

Stephen B. & Estella Killian

King's College

David & Mary Kolessar

Dr. William Krah III

Karen Labbate

Life Stories Remembered, LLC

Carol Lizell

Loren J. Grossman, DMD

Luzerne County  
Community College

Marc & Susan Magnotta

Richard Maslow

Gert McGowan

Medico Industries

Rob & Kim Mericle

MPA LLC - Marilyn &  
Scott Millington

Susanne Mullin

Tony & Elaine Palischak

The Parsons Family



*Winter came down to our house one night Quietly pirouetting in on  
silvery-toed slippers of snow. And we, we were children once again.*

~ Bill Morgan, Jr.



## CONSERVATOR

\$250-\$499 (continued)

Peoples Security Bank & Trust

Sandy Piccone

Power Engineering

Thomas & Christine Pugh

Rainbow Jewelers

Sandy Rhodes & Julie A. Dostal

Phillip Roth

Marshall & Anne Rumbaugh

Rutkoski Fencing, Inc.

Matthew Sciabacucchi

James & Susan Shoemaker

Bonnie Silvetti

Drs. Henry F. & Catherine Smith, Jr.

Mark Smith

Donna Ayers & Alan Snelson

Jon Sordoni

Karl & Cindy Swankoski

The Tambur Family Foundation

Stephen Taren

Top of the Slope Ski Shop

Bruce & Roberta Troy

Marleen Troy

Carl R. Urbanski

WBRE

Bob & Maureen Whipple

Francesca Williams

Nancy Wottrich

Wyoming Valley Art League

Tracy Zarola

Brian & Alison Zurawski



## SUSTAINER

\$100-\$249

3 Sisters

Joan E. Abrey

John & Beth Aciukewicz

Richard P. & Linda J. Adams

Nancy Alonzo

Around Town Bicycles

Kermit & Sally Ayres

Alice Baer

Cindy Beaumariage & Rick Mooney

Dorrance R. & Susan Belin

David & Phyllis Billings

Barbara Bradley

Therese Bunton

Charles R. & Elizabeth Carmalt

Lee Case & Graysha Harris

Thomas & Patricia Finan Castellano

Kathy Celli

Paula Chaiken & Joe Kraus



## SUSTAINER

\$100-\$249 (continued)

Stephen Chronowski	Five Mountain Outfitters
Bill & Ruth Corcoran	James & Elizabeth Flannery
Andy & Marsha Costello	Floral Designs
Vincent & Lori Cotrone	Dr. Louis & Nancy Freedman
Bill Dantona	Linda Gearhart
George & Carol Daru	George Burger & Sons
Steve Davenport	Maureen Givnin-Haas
Dr. Patrick J. DeGennaro	William M. Gleason & Sandra Gardosik
Jay & Valerie Delaney	Walt & Marilyn Glogowski
Allan & Debra Dick	Sherry Goldwein
Jim & Laura Dickson	James & Janice Gorman
Joe DiMaggio	David Greene
Mike & Rachael Dziak	Doris & William Greiner
Endless Mountain Outfitters	Dr. Loren & Lisa Grossman
Eberhard Faber	Thomas & Judith Hall
FAME STRENGTH	



*Natures Reclamation, Noxen*

*Broad Leaf Arrowhead*



Sid Halsor & Cydney Faul-Halsor  
Carl & Francie Handman  
Louise S. Hazeltine  
Hillard House Inn  
Michael & Sharon Hinchey  
William E. Hine, Jr.  
Colleen Hodakowski  
Josh & Evelyn Hogan  
Anne & Frouke Holmes-de  
Quillettes  
Honeyhole Longbeards  
Chapter NWTF  
Howard & Julianne Daly  
Charitable Gift Fund  
Ira & Deborah Hufford  
Richard M. & Ruth Hughes III  
Frank, Alice, Andy &  
Christina Hughes



## SUSTAINER

\$100-\$249 (continued)

InterMetro Industries	Robert & Maureen Matiska	Paul & Rachelle Pryor
Irem Country Club Pro Shop	Sandy McGovern	Charles A. & Mary Annette Rawls
Isabella Restaurant & Bar	Cathy McHugh	Barbara Reel
J.H. Williams & Co LLP	Erin McLaughlin	Dave Reel & Mimi Kaufman
Annie Jobson	Kris Medic & Bruce Thomason	Reeves Rent-A-John, Inc.
Maribeth Jones	Gretchen Melnyk	Harry & Liz Reich
Wendell & Kathy Jones	T. Bryant Mesick	John Riccetti
Joseph & Edith Kachurak	Metz Culinary Management	James P. Ridolfi & Marguerite Glaser
Bill, Kim & Kaelee Kane	Clarence J. & Morag E. Michael	David & Judy Rimple
Christopher Kelly	Guthrie Mitchell	Christine Romani
Joe & Diane Kerestes	Dr. Renee Monahan	Bill & Joanne Runner
Kevin's Restaurant	Dave & Denise Moore	Megan Rutkoski
Allan & Sue Kluger	Dr. Phil & Rev. Barbara Muntzel	Nicole Santo & Peter Yochum
Anthony J. & Vivian Korch	Diane L. Nagle & Joseph G. Schneiderite	
Allen Kropiewnicki	Nahas & Donahue Orthodontics	
Debra Krysicki	Russell G. Newell	
Dr. William J. & Nancie Krywicki	Barry & Marilyn O'Boyle	
Dave & Karen Kyle	Thomas M. Ogorzalek	
Betsy LaRoza	Terry Ostrowski	
Michael & Patrica Last	Panzitta Enterprises, Inc.	
Bob & Shirley Leitner	Joseph & Rose Marie Panzitta	
Mary Ann Lepa	John & Melissa Parente	Deborra Schauss
Ann R. Lewis	Leigh Pawling	Dave & Laurie Schwager
Kathryn Lietz	John Pekarovsky III	Charlie & Helen Schwarz
Lockard Surveying & Mapping	Anne Pelak	John & Natalie Shoemaker
Luzerne Bank	Robert Phillips	Shooze
Stephen & Tiffany Maakestad	Robert A. Piccone	Paul & Millie Slocum
Dr. Michael A. & Tina MacDowell	Ken & Nancy Kaiser Pidcock	Ellen Smith
Peter & Cindy Mailloux	Lauren Pluskey McLain	Space & Time Professional Organizers
Marquis Art & Frame	Carole Poggi & Joseph Butkiewicz	Gerald & Sandra Stankiewicz
Martz Travel	Daniel Pope	
Allison L. Maslow		





## SUSTAINER

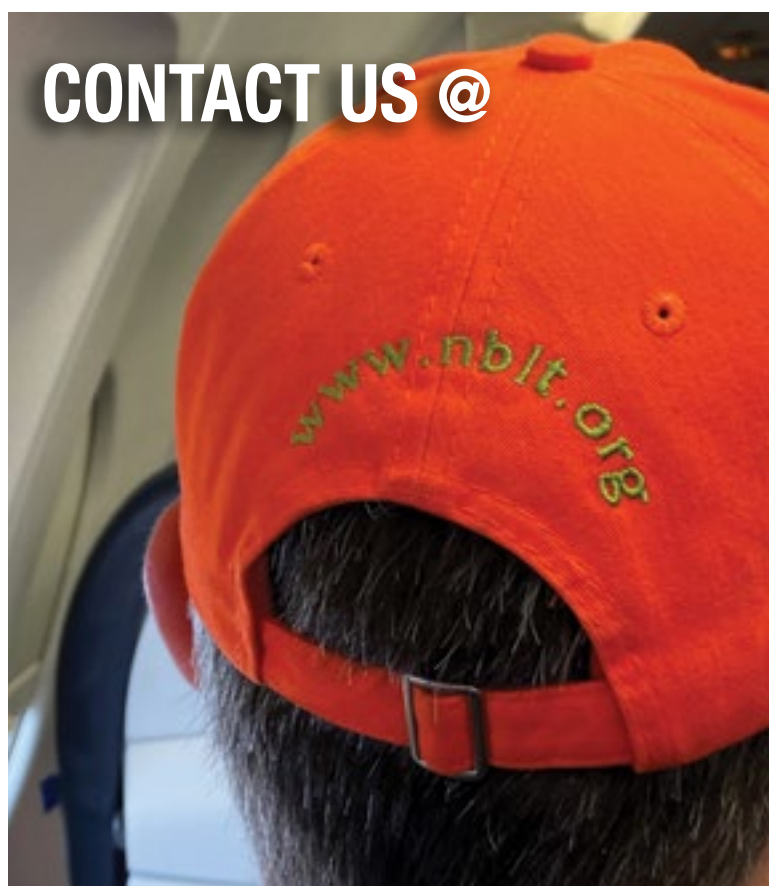
\$100-\$249 (continued)

Marilyn Stark	White House Diner
Laurie Stephens	Dr. Brian E. Whitman
Ryan & Holly Stoa	Ben & Rachel Wiernusz
Pamela Story	Gary & Denise Williams
Jay & Fran Tanner	Jim Witinski
TCO Fly Shop	Eric Woelfel
Michael Tomalis & Theresa Gatusky	Jim & Rebecca Wolfe
Barry & Shirley Triebel	Molly Wright
Lenny Trolie	Wyoming Valley Country Club
Fred Valentine	Joseph Yannuzzi
Garry VanScoy	Craig & Karen Yarrish
Janet Venetz	Suzanne M. Young
Richard Ward	Raymond Youngblood
Alixandra L.C. Westbrook	Richard & Janet Zimmerman

## STEWARD

\$50-\$99

Abe's Hot Dogs  
Jane Albright  
Dr. Joseph & Maureen Anistranski  
Back Mountain Bloomers  
Garden Club  
Bennie's Nurseries  
Michael Bertram  
Jim & Beth Black  
Borwick's Performance Hi-Fidelity  
Melody Buck  
John & Karen Burden  
Gene & Barbara Camoni  
Mike & Alene Case  
Lawrence Cohen  
Rylan Coker & Rebecca Lane  
Jodi Crimmel  
James & Kate Crowley  
Dave & Roberta Daniels  
Barbara Davis  
Deborah Demuro  
Dr. Wayne & Bonnie Dombroski  
Brooks Eldredge-Martin  
Eleventh Element  
Christine Erb  
Sanford & Maryann Evans  
Dr. Herbert Fellerman  
Ned Fetcher  
John & Mary Fitzpatrick  
Alison D. Flanagan  
John C. & Joan S. Foster  
Trudy D. Gerlach  
Joe & Steve Germick





## STEWARDS

\$50-\$99 (continued)

Michael M. Gondell	Thomas & Andrea Mosca	Charles & Sharon Stanski
Rich & Bonnie Gower	Verlon & Mary Lou Nichols	Theresa Stewart
Green Owl Provisions	Claudia Niezgoda	Greg & Vera Supey
Evelyn Hagen	Frank Orloski, Jr.	Erin Tanner
Ellie Harding & David Birchler	John & Mickie Ostrum	Steven & Joan Taylor
Lucia Harkenreader	James & Colleen Panzitta	The Cafe
Rodney Heckert	Penn State Wilkes-Barre	The Upstairs Gallery
Thomas & Carol Herbert	Charlie & Marion Boyle Petrillo	Jon Thomas
Ted & Patty Horn	Michele Phillips	Jim & Jane Turner
Robert C. & Nancy Houck	Michael & Jacqueline Pramick	Bob & Catherine Veleker
James & Eileen Hoyson	Theron I. & Pam Russell	Robert & Irene Wendoloski
Carol Husa	Michele Schasberger & Michael Polgar	Theodore S. Wiaterowski
Ray & Julie Iwanowski	Susanne Schmitthenner	Lillian Wittmer
Beverly Johnson	Maya Shikhman	William R. Woronko
Commissioner Ernie King	David Shinaly	Sharon Wunner
Renee Kohler	Lillian D. Smith	Robert & Elaine Zavada
Catherine Korb	Scarlett Spager	Matthew & Lauren Zluchowski
Constance Kozel	Stanley Spencer	Ed & Amber Zygmunt
Rita Krill		
Lang Beverage Co.		
Edward Lipski		
Dr. William & Becky Loftus		
Michael & Mary Grace Loncoski		
Susan A. Longo		
Marianne Lurie		
Louis Marcin		
Philip & Kathy Marino		
Dr. Matthew & Susan Berger		
Bob & Nancy Mayer		
John & Doris McQuade		
Bob Mercado		
Chris Miller		

### GIFTS IN MEMORIAL

Donations were made in memory of the following:

Dr. Douglas Ayers

Betsy Condron

Frankie Gubbiotti

### GIFT IN HONORARIUM

Donations were made in honor of the following:

Barbara Romanansky

### GIFT IN MEMBERSHIP

Donations were made in memory of the following:

Bear Creek Organics

### MATCHING GIFTS

The following organizations matched donations from members:

Bank of America  
Charitable Foundation

Benevity Community Impact Fund

Johnson & Johnson Matching Gifts

NBLT makes every effort to ensure the accuracy of these listings. If you find an omission or a misspelling, please excuse our error and contact the office at [gorney@nblt.org](mailto:gorney@nblt.org) or call 570-310-1781 to update our records for future donor listings.



**SUPPORTER**  
**\$49 and Under**

---

Lynn K. Aldrich  
Russ Andrews  
Barb Andricks  
Nancy Baker  
John & Sandra Bensinger  
John & Darlene Bero  
Richard Bishop  
Tiffany Buchman  
Gary R. & Kim Carpenter  
Maureen Collins  
Common Grounds Caffé  
Barbara Craig, RSM  
Suzanne Druffner  
Louise Edwards & Gary Johnston  
Carole Ertley  
Glenn & Laura Frank  
Jeanette Godlewski  
Dr. Jon & Beverly Hart  
Joyce Lang  
Jenny B Designs

Julia Jonelunals  
Linda Joseph  
Michele Kenny  
Daniel & Hyon Kim  
Joseph Kluger  
David & Patricia Kowalek  
Mary Kucewicz  
Frank & Susan Libertoski  
Kelly Lindsay  
Janice Lohmann  
Amber Loomis  
Dave & Diane Madl  
Ruth Major  
Palmira Gregory Miller  
Laurie Montigney  
Movies 14  
Donna Ondish  
Ed & Wanda Piestrak  
Kevin Quinn  
Kevin & Adele Reilly

Sally Robertson  
Linda Rowe  
Wilma A. Schierer  
Joan Schooley & Fred Willauer  
David Searfoss  
Thomas J. Shelley  
Christopher Sides  
Joe & Rose Slusark  
Jean Smith  
Social Fabric Collective  
James & Shirley Strohl  
Suraci's Italian Cafe  
Susquehanna Brewing Co.  
Barbara A. Toczko-Maculloch &  
George Maculloch  
Elva Valentine & David Green  
Kevin Walsh  
Jack Zelinski  
Carol Zukowski

*Picton Wildlife Sanctuary, White Haven*





# FINANCIAL INFORMATION

North Branch Land Trust financial statements are prepared on the accrual basis of accounting in accordance with standards established by the Financial Accounting Standards Board (FASB) for external financial reporting by non-profit organizations. The charts below provide a breakdown of where our operating funds come from and how they are spent. As a community-based non-profit, the Trust relies heavily on contributions from individuals, businesses, and foundations within its service area. The Trust staff spends the majority of its time and resources on land conservation projects and education and outreach activities. All funds raised stay local!



### REVENUE BY SOURCE

Contributed Support.....	\$135,560
Earned Revenue .....	\$ 76,200
Special Events .....	\$ 99,500



### EXPENSES BY TYPE

Program Service.....	\$268,552
Administrative .....	\$108,900
Fundraising .....	\$ 52,250

The Total Revenue above reflects the revenue needed to operate North Branch Land Trust. It does not reflect the funds raised for the protection of land or other capital projects, a number which can vary widely from year to year.

**Renew your membership, become a new member, or give a gift membership today by retuning the enclosed envelope or donate at [nblt.org/donate](http://nblt.org/donate)**

### GUARDIAN SOCIETY MEMBERSHIP

Highlands Guardian .....	\$5,000+
Woodlands Guardian .....	\$2,500
River Guardian.....	\$1,000

### MEMBERSHIP

Protector.....	\$500
Conservator.....	\$250
Sustainer .....	\$100
Steward.....	\$ 50



DONATE

# THANK YOU!



North Branch  
Land Trust

## 2020 Annual Report

EDITOR/DESIGN

Paul Lumia

PRINTING

Llewellyn & McKane, Inc.

PHOTO CONTRIBUTORS

Rylan Coker

Paula Fall

Tina Fiorani

Matt Giambra

Mark Herring

Paul Lumia

Allison Maslow

Audra Mitchell

Deno Pantelakos

Barb Romanansky

Bruce Whipple

NBLT Staff

### North Branch Land Trust

251 Huntsville-Idetown Road  
Dallas, PA 18612

P 570.310.1781

F 570.310.1791

[info@nblt.org](mailto:info@nblt.org) | [www.nblt.com](http://www.nblt.com)



The official registration and financial information of North Branch Land Trust may be obtained from the Pennsylvania Department of State by calling toll free, within Pennsylvania, 1-800-732-0999. registration does not imply edorsement.





251 Huntsville-Idetown Road  
Dallas, PA 18612



ADDRESS SERVICE REQUESTED

Non-Profit Org.

US POSTAGE

**PAID**

Dallas, PA  
Permit No. 12

## SUPPORTING THE PROTECTION OF OUR NATURAL HERITAGE!

Committed individuals, businesses and like-minded organizations fuel the land conservation work of North Branch Land Trust. Please consider a gift this year by returning the enclosed envelope or donate at [www.nblt.org/donate](http://www.nblt.org/donate)



DONATE



*Dino Pantelakos*  
NEPA Nature Photographer